

SPECapc Siemens NX-2406 Benchmark Rules

Overview:



The SPECapc for Siemens NX-2406 is a performance-evaluation software for vendors and users of systems running Siemens NX software.

The benchmark consists of ten tests (six viewport tests and 4 computational tests) that exercise various aspects of system performance when running typical workloads in Siemens NX. The graphics-oriented tests measure performance for the: Studio, Wireframe, and Shaded display modes. Additionally, the computational tests measure performance for the following workflows: loading models, exporting models to various popular file formats, mass property calculations, and closest point calculations.

Scoring:

Scoring for the benchmark is based on the following reference machine:

<i>Component</i>	<i>Reference Machine</i>
CPU	Intel(R) Core(TM) i9-10900K CPU @ 3.70GHz
GPU	NVIDIA RTX A1000
OS	Microsoft Windows 11 Enterprise 22H2
Display Resolution	1920 x 1080
Siemens NX Version	Unigraphics V2406 v2406.0.0.6001

SPECapc Siemens NX-2406 Benchmark Rules

Benchmark System Requirements:

System:

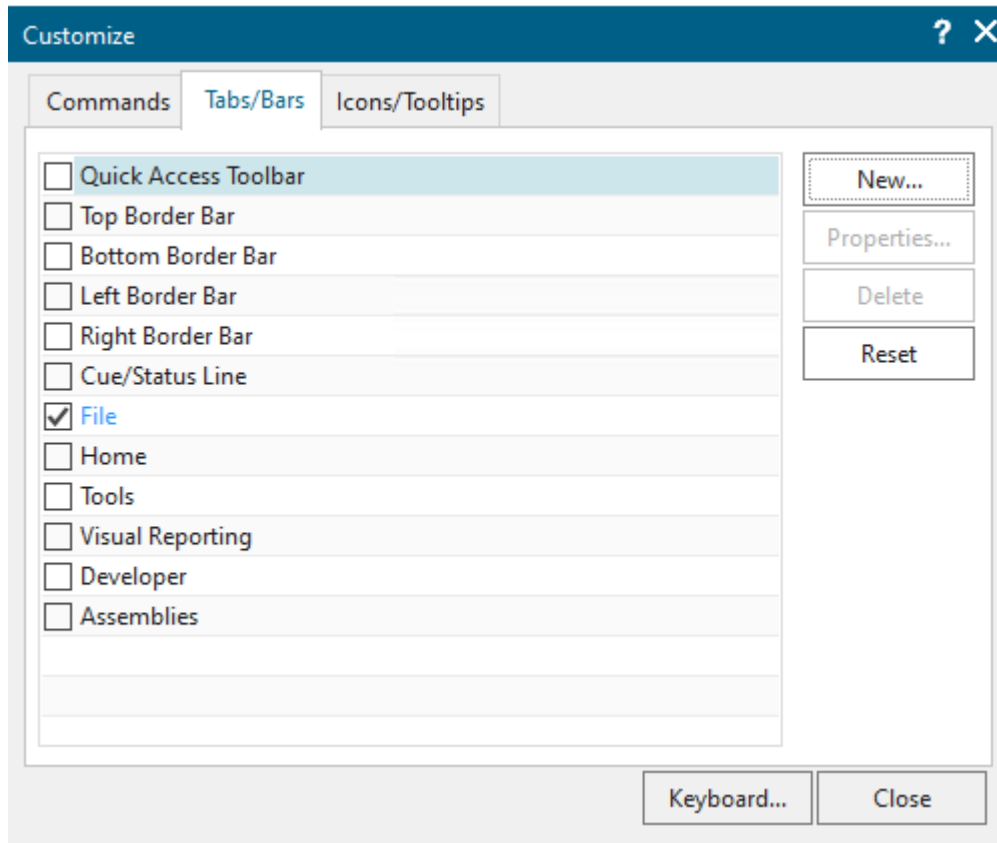
- Platform support for Microsoft Windows 10 and Windows 11 OS
- Minimum 8GB main memory
- Minimum 1920x1080 display resolution and Windows Display Scaling set to 100%
- Graphics cards that support at least OpenGL 4.0

Installation:

- Licensed installation of NX v2406.0.0.6001
 - Automated Testing Studio license (not included in the base license)
- Python installed and included in path

Benchmark Setup:

1. Ensure the taskbar is set to automatically hide.
2. Start NX, with the default application settings unaltered.
3. Maximize the NX window.
4. Hide all tabs on the left side.
5. Right-click in the tool bar area of the main NX window and select “Customize”.
6. Uncheck every item in the list until only “File” is left, which cannot be unchecked.



7. Exit NX.

SPECapc Siemens NX-2406 Benchmark Rules

Notes:

- Borrowing licenses from the Siemens NX licensing tool may affect performance
- Differences in screenshot resolution are likely attributable to incorrectly following the steps outlined in the run rules, please follow the steps outlined to ensure that the viewport resolution remains consistent

Benchmark Setup:

1. Set display resolution to a minimum of 1920 x 1080.
2. Reboot the system.
3. Launch benchmark.
4. As the benchmark runs, refrain from interacting with the system.
5. Ensure that nothing is obscuring the NX window, including taskbar, application pop-ups, and other applications.
6. The benchmark takes approximately 50 minutes to run on a median system.
When the benchmark is complete, the results will be displayed in a package.

Results:

Results are located in the following folder:

□ %USERPROFILE%\Documents\SPEC Results\SPECapc for Siemens NX 2024

□